

PAUL-GOTHE-GmbH Bochum

Wittener Straße 82
D-44789 Bochum



Manual

for

Filter device heater (35.03, 35.06) and heated Aluminium casing

Before use check the electrical condition of the appliance. For your safety: Don't connect with the power supply if you can see any damage.

Use this heater only in combination with a regulator. Don't use it without any controlled power supply -also not a short period-.

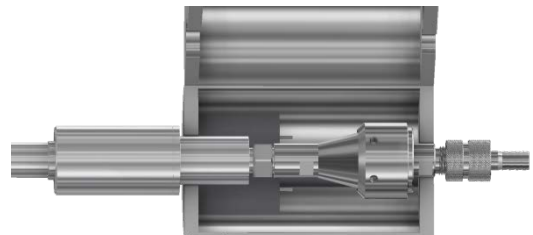
The small heater is folded around the rear end of the suction tube.

The large heater is mounted by flange on the suction tube. At the exit can mounting a carrying box for bubbler and be secured with an aluminum plate.

More information and the Declaration of Conformity can be found at service and support on: www.paulgothe.de

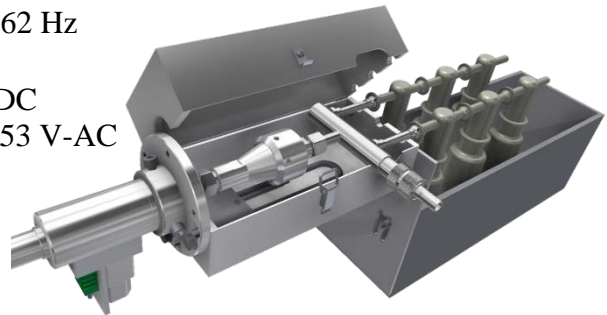
How to use:

1. Connect Thermocouple with the regulator.
2. Connect plug to the power supply at the regulator.
3. Set temperature at the regulator



Technical Data

Power supply:	max. 250 V; 48 ... 62 Hz
max. temperature at heater:	500°C
Isolation-resistance (cold):	≥ 5 MΩ at 500 V-DC
fall. Amperage:	max. 0,5 mA bei 253 V-AC
material of the heater:	CrNi-Stahl
heater isolation:	MgO
Thermocouple (option):	NiCr-Ni type K



Demands on the heating controller:

The service life of the built-in heaters should not be shortened by overuse, we recommend a heating controller with automatic soft-start function. With this function can slowly evaporate any moisture from the heater.

The devices should be stored at room temperature and generally dry. If this is not possible, the unit must necessarily heated advance at low power (current limit!): The heater must heat up very slowly and be heated to 80-120°C for 1-2 hours. After this procedure the unit is usable.

We recommend our heating controller with PID control technology.